

ENGLISH LANGUAGE LEARNERS

ACTIVITY BOOK

3-4



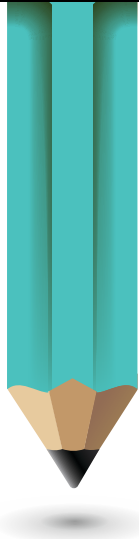
LEGISLATIVE
ASSEMBLY
OF ALBERTA

Contents

The Alberta Legislature Building 1	How Government Representatives Are Elected 19
<i>Listening Comprehension Activity</i>	<i>Reading/Listening Activity</i>
Government of Canada 3	How Government Representatives Are Elected 22
<i>Jigsaw Reading Activity</i>	<i>Reading/Listening Activity</i>
Government of Canada 7	Political Parties 25
<i>Worksheet</i>	<i>Reading Comprehension Activity</i>
How Many People Can You Name? 9	Alberta's Leaders 27
	<i>Reading Comprehension/Grammar Activity</i>
How a Bill Becomes Law in Canada 10	Internet Research 32
<i>Reading Comprehension/Speaking Activity</i>	
The Statues in the Rotunda 12	Women's Rights in Canada 33
<i>Reading Comprehension Activity</i>	<i>Listening</i>
	<i>Speaking</i>
Chamber Doors and the Coat of Arms 15	Post Activity 37
<i>Reading/Vocabulary Activity</i>	<i>Speaking</i>
	<i>Speaking/Self-assessment</i>
The Mace 17	<i>Reading</i>
<i>Reading Comprehension Activity</i>	Post Activity 42
	<i>Writing</i>



The Alberta Legislature Building



Listening Comprehension Activity

Match the words on the left to the correct definitions on the right.

..... A tropical tree

..... An adjective that means covered with lots of decorations

..... Talk about, discuss

..... The gardens around a building

..... Something that supports the roof of a building

..... A large, round roof or ceiling

..... A type of stone used in buildings

a. Grounds

b. Pillars

c. Marble

d. Palm

e. Dome

f. Ornate

g. Debate

You will hear information about the Alberta Legislature Building. After you listen, fill in the blanks, using the word list below. Compare your answers with a partner.

- palm trees*
- Legislative Chamber*
- Grand Staircase*
- viewing gallery*
- Speaker's chair*
- reflecting pool*
- dome*
- fountain*
- rotunda*
- flags*



The Legislature Grounds

The front of the building includes a and a



The Second Floor

When you enter the building, you are in the In the middle there is a There are on the walls. If you look up, you will see surrounding the.....



The Third Floor

When you are standing in the rotunda, you will see the in front of you. At the top you will see the doors to the.....



The Legislative Assembly Chamber

The is at the head of the Chamber. The is where the public can sit and watch the Legislature in session.



Government of Canada

Jigsaw Reading Activity

Student A: *The Federal Government of Canada*

Canada has a parliamentary system of government. Parliament is made up of three parts: the Sovereign, the Senate and the House of Commons.

The Sovereign

King Charles III is Canada's head of state. His representative in Canada is the *Governor General*.

The Senate

Senators review and vote on Bills (proposed laws). They are appointed by the *Governor General* on the advice of the Prime Minister. There are 105 *Senators* in the Senate today.

The House of Commons

Members of Parliament (MPs) have meetings in the House of Commons in Ottawa. MPs are elected by the people. Their job is to represent the people of Canada. Right now there are 338 MPs in Parliament. When there is an election, the leader of the party with the most elected MPs becomes the *Prime Minister of Canada* (the head of the federal government).

The Prime Minister

Chooses some *Members of Parliament* from his or her party to give advice and to help form government policies. These people are called *Cabinet Ministers*.



Sovereign (King Charles III)

The Sovereign is represented in Canada by the *Governor General*.

Senate

The Senate includes appointed members called *Senators*.

House of Commons

Members of Parliament (MPs) are elected by the people and meet in the House of Commons. MPs include government Members and opposition Members.

Prime Minister and Cabinet

Pronunciation

Listen to your teacher say each word and mark the word stress like the example.

- Sovereign*
- Representative*
- Parliament*
- Governor*

- Opposition*
- Senators*
- Member*
- Elected*

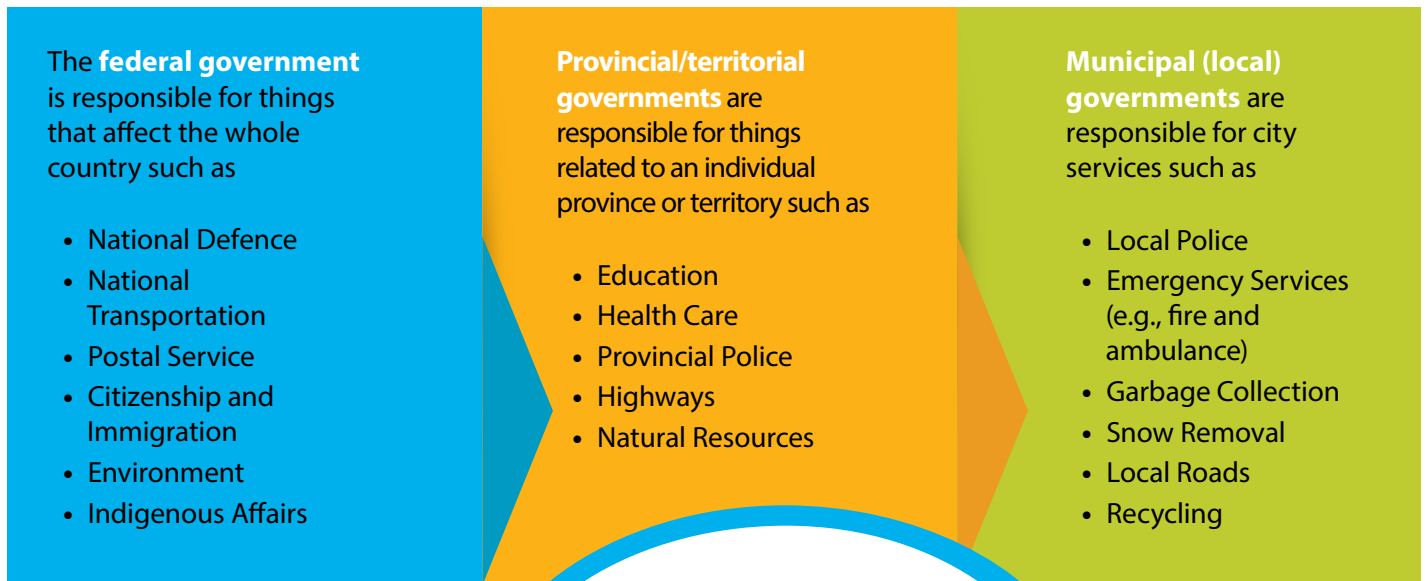
- Appointed*
- Minister*
- Proposed*
- Federal*

Student B: *Three Levels of Government*

There are three levels of government in Canada: federal, provincial/territorial and municipal. Canada has 10 provincial governments and three territorial governments. The government of Alberta is one of the provincial governments.

The **Prime Minister** is the head of the federal government. The **Premier** is the head of the provincial government. The **Mayor** is the head of the municipal government.

Each level of government has its own responsibilities as you can see below.



Which government services have you used since you came to Canada?

Pronunciation

Listen to your teacher say each word, and mark the word stress like the example.

- Government**
- Federal**
- Provincial**
- Municipal**

- Premier**
- Citizenship**
- Immigration**
- Indigenous**

- Territorial**
- Emergency**
- Responsible**
- Ambulance**

Student C: *The Provincial Government of Alberta*

The provincial government of Alberta is organized in much the same way as the federal government except there is no Senate. The Lieutenant Governor of Alberta is the Sovereign's representative in the province. The provincial government of Alberta has a Legislative Assembly that includes elected representatives, called Members of the Legislative Assembly (MLAs). There are 87 MLAs from across the province. They meet in the Legislature Building in Edmonton.

During an election citizens vote for an MLA to represent them. After the election the leader of the party with the most elected representatives becomes the Premier of Alberta.



Pronunciation

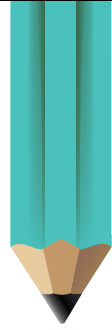
Listen to your teacher say each word, and mark the word stress like the example.

- Government**
- Federal**
- Provincial**
- Organized**

- Premier**
- Senate**
- Representative**
- Legislative**

- Assembly**
- Elected**
- Sovereign**
- Lieutenant**

Government of Canada



Worksheet

1. Answer the questions about your reading.
2. Listen to your classmates talk about their readings and answer the questions.

Student A: *The Federal Government of Canada*

Which system of government does Canada have?.....

What is the King's representative called?.....

What do *Senators* do?.....

What do *Members of Parliament* (MPs) do?.....

Are *Members of Parliament* elected or appointed?.....

How many MPs are there?.....

Where do they meet?.....

How does someone become the *Prime Minister of Canada*?.....

.....

What do *Cabinet Ministers* do?.....

Student B: Three Levels of Government

What is each level of government in Canada called?

.....

Name three things for which the government of Canada is responsible.

a..... b..... c.....

Name three things for which the government of Alberta is responsible.

a..... b..... c.....

Name three things for which the local government of Edmonton is responsible.

a..... b..... c.....

Student C: The Provincial Government of Alberta

What is one major difference between the federal government and provincial/territorial governments?

.....
.....

How many provincial governments are there?.....

How many territorial governments are there?.....

Who is the Sovereign's representative in the provinces/territories?.....

Are Members of the Legislative Assembly (MLAs) appointed or elected?.....

How many MLAs are in the Legislative Assembly of Alberta?.....

How does the Premier get his/her job?.....



How Many People Can You Name?

Use the Internet to search for the names of each of the people below. Also, add the current year so you get the name of the person who is currently in the job.

Current Year:

Canada's Head of State

The Prime Minister of Canada

The Governor General of Canada

The Premier of Alberta

The Lieutenant Governor of Alberta

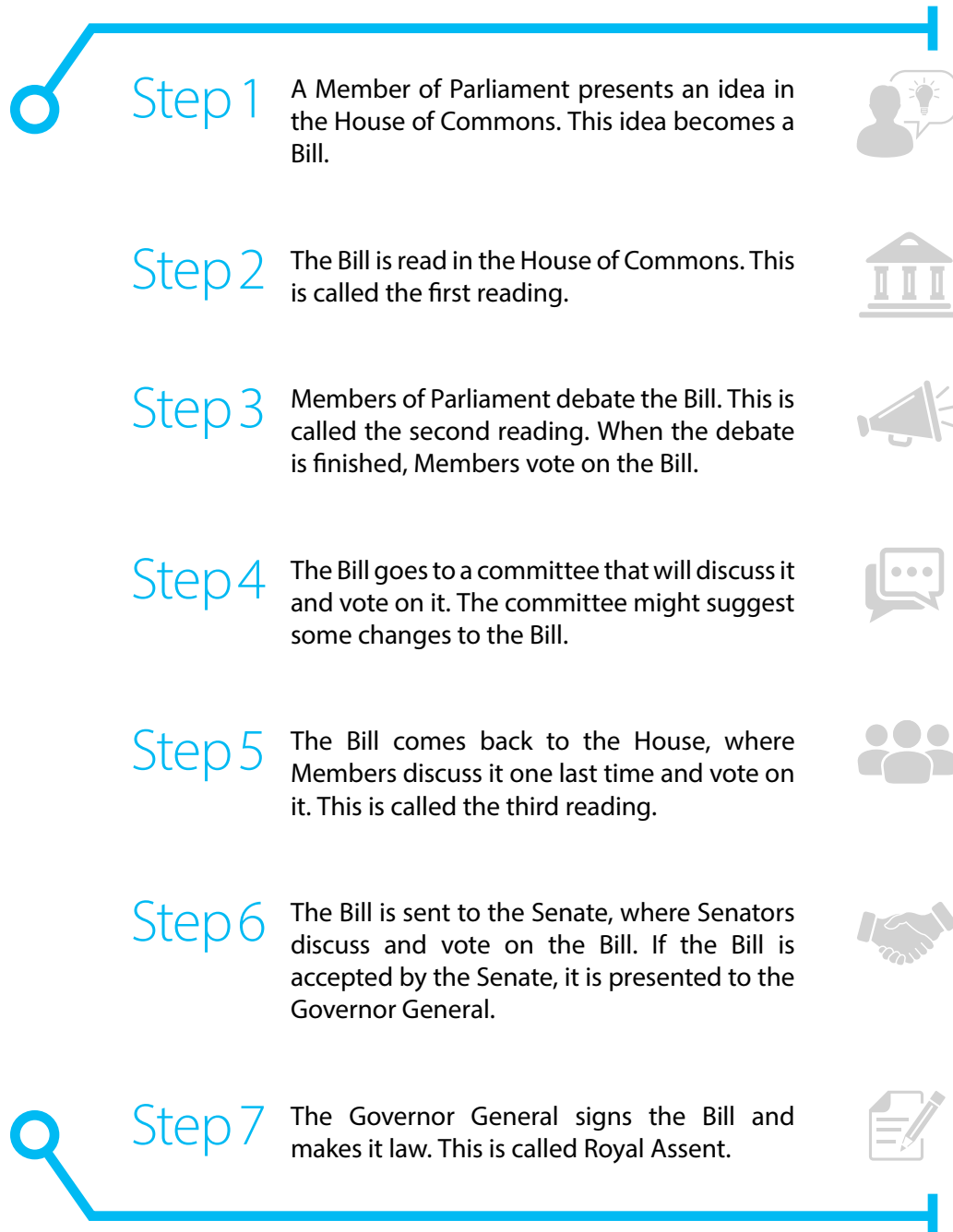
The Mayor of Edmonton

Your MLA

How a Bill Becomes Law in Canada

Reading Comprehension/Speaking Activity

A Bill is an idea for a new law. A Bill could also be a change to a law that already exists. Before a Bill becomes a law, it must go through each of the steps below.



Citizenship and Immigration Canada (2009). Discover Canada, Ottawa. P. 29. Adapted with Permission.

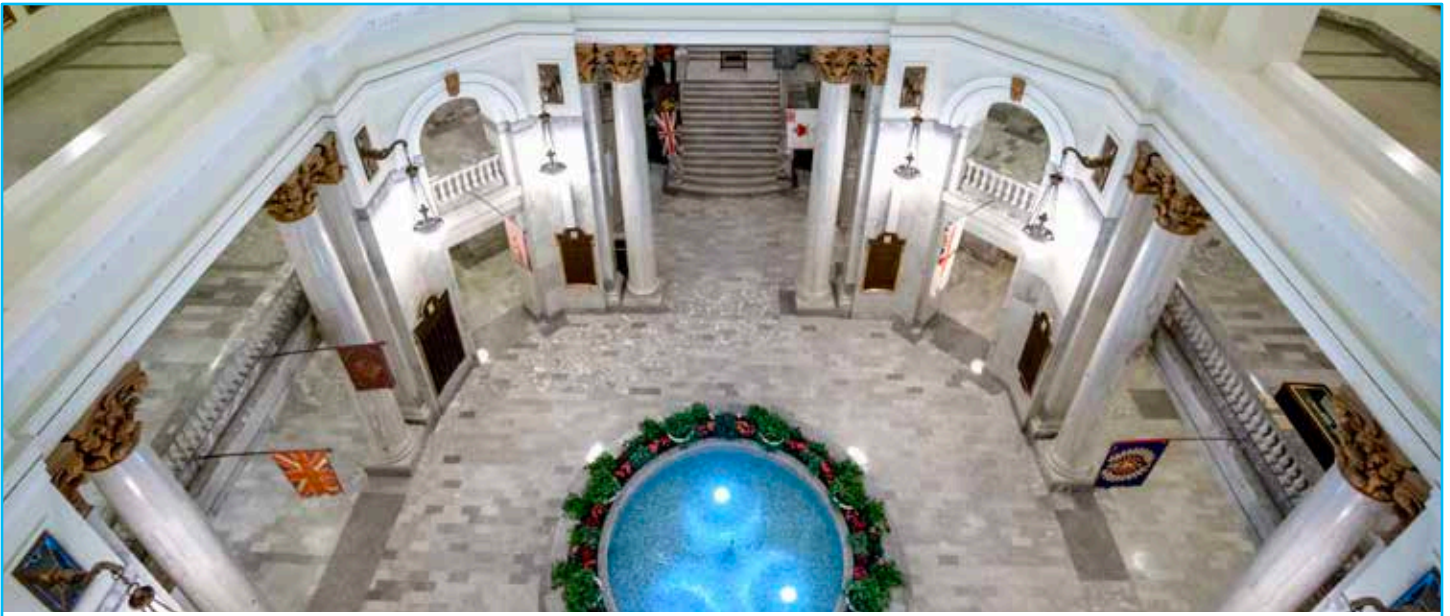
Comprehension Questions

1. What is the name of an idea for a new law or a change to an existing law?.....
2. How many readings does a Bill have?.....
3. Who gives a Bill Royal Assent?.....

Language Practice

We often use sequence markers to describe the steps of a process. Sequence markers tell you the order of each step in the process. Some examples of sequence markers are *first, second, third; next, then, after that; finally and lastly*.

With a partner practise using sequence markers to describe the steps in the process of making a law in Canada.

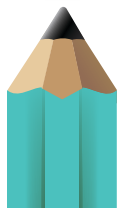


The Statues in the Rotunda

Reading Comprehension Activity

Match the words on the left to the definitions on the right. Check your answers with your partner.

- | | |
|----------------|--|
| 1. Bronze |First Nations |
| 2. Century |an area of land |
| 3. Indigenous |a long stick used when riding horses |
| 4. Treaty |the bone in your head to protect your brain |
| 5. Territory |relating to ceremonies |
| 6. Skull |a type of metal |
| 7. Riding Crop |religious |
| 8. Ceremonial |an agreement between First Nations people and European immigrants |
| 9. Spiritual |100 years |



Princess Louise Caroline Alberta

Read the text about Louise Caroline Alberta.



In the Alberta Legislature Building you will see a bronze statue of Louise Caroline Alberta. She was a British princess who lived in Canada in the 19th century. She was also married to the Marquis of Lorne, who was the *Governor General* of Canada from 1878 to 1883. As *Governor General* her husband represented Queen Victoria in Canada. Queen Victoria was Princess Louise's mother. The province of Alberta and Lake Louise are named after the princess.



Listen to your partner talk about Louise Caroline Alberta. Answer the True/False questions.

1. Louise Caroline Alberta was the Governor General of Canada. T F
2. Princess Louise lived in Canada in the 1900s. T F
3. Princess Louise was related to Queen Victoria. T F
4. The Legislature Building is named after Princess Louise. T F
5. The statue of Louise Caroline Alberta is made of bronze. T F

Chief Crowfoot



Read the text about the statue of Chief Crowfoot.



Chief Crowfoot was the leader of the First Nations Blackfoot people in the 1800s. The Blackfoot were the **Indigenous** people who lived in southern Alberta. In 1877 Crowfoot signed a **treaty** that allowed the Canadian Pacific Railway to run through Blackfoot **territory**.

In the Legislature Building you will see a statue of Chief Crowfoot. Around his neck he is wearing a medal, which he received for signing the treaty. On top of his head is an owl's **skull**, which was braided into his hair every day of his life. It is a symbol of protection and leadership. At his side is a **riding crop**, which reminds us of his horse and the power he held in his society. He also has a pipe bag, which is a symbol of his role as a **ceremonial** and **spiritual** leader. Pipe smoking was an important part of the Blackfoot culture.

*Listen to your partner talk about Chief Crowfoot.
Answer the True/False questions.*

1. Chief Crowfoot was the leader of a group of First Nations people in Alberta. T F
2. He did not want a railway to run through Blackfoot land. T F
3. He wears a medal as a symbol of his leadership. T F
4. He has a riding crop because he rode horses very well. T F
5. Blackfoot people often smoked a pipe during important ceremonies. T F



Chamber Doors and the Coat of Arms

Reading/Vocabulary Activity

The doors at the top of the Grand Staircase lead to the Legislative Chamber. They are made of mahogany and carved by hand. The Lieutenant Governor and the Officers of the Assembly use these doors to enter the Chamber. MLAs (who are elected) enter the Chamber through the side doors. Nonelected officials need to be invited onto the Chamber floor before they can enter. The Sergeant-at-Arms must knock on the doors with a Black Rod to ask permission before the Lieutenant Governor comes into the Chamber.

The Chamber doors have the coat of arms. The coat of arms is also on the Alberta flag. It includes many symbols of Alberta. How many can you name? What do you think some of the symbols mean?

Comprehension Questions

- Why does the Lieutenant Governor need to be invited into the Chamber?.....
- How does he/she get permission to enter the Chamber?.....
- How do MLAs enter the Chamber?.....



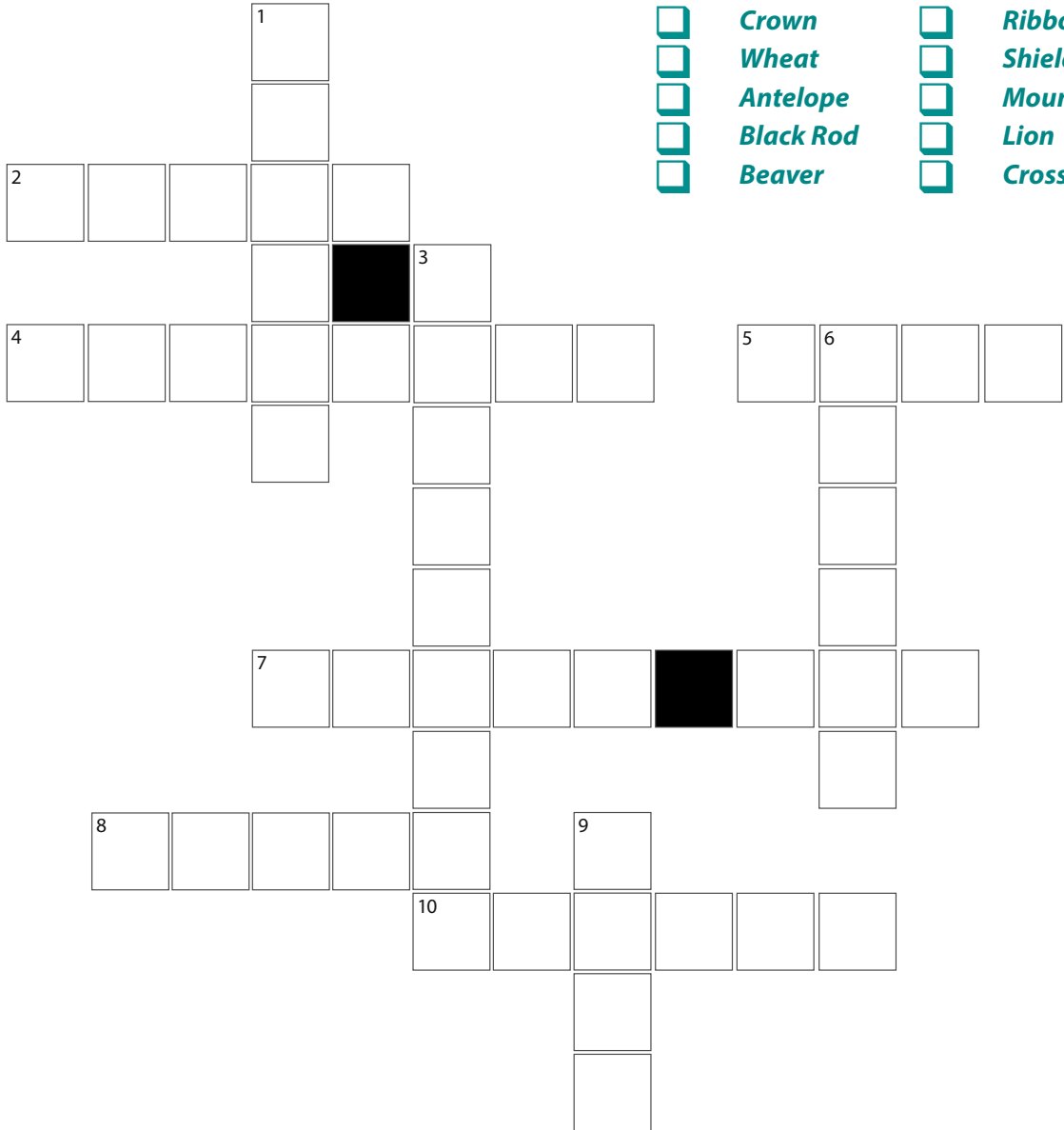
Alberta Flag



The Coat of Arms





Crossword Puzzle

Complete the crossword using the pictures and word list to guide you.



- | | | | |
|--------------------------|------------------|--------------------------|------------------|
| <input type="checkbox"/> | Crown | <input type="checkbox"/> | Ribbon |
| <input type="checkbox"/> | Wheat | <input type="checkbox"/> | Shield |
| <input type="checkbox"/> | Antelope | <input type="checkbox"/> | Mountains |
| <input type="checkbox"/> | Black Rod | <input type="checkbox"/> | Lion |
| <input type="checkbox"/> | Beaver | <input type="checkbox"/> | Cross |

Across

- 2. 
- 4. 
- 5. 
- 7. 





8.



10.



Down

- 1. 
- 3. 
- 6. 
- 9. 



The Mace

Reading Comprehension Activity

The Mace is the traditional symbol of the Legislative Assembly. It symbolizes the Assembly's authority to make laws for the people.

The Mace is carried into the Chamber whenever the Assembly is in session. When the Lieutenant Governor enters the Chamber, the Mace (as a representation of the Assembly's authority) is covered because the Lieutenant Governor represents the Monarch, and you cannot have both symbols of power in the Chamber at the same time. The Mace is made of silver, plated gold and many jewels. There are also many symbols covering the Mace. Some of the symbols include the beaver, the provincial shield, Alberta's coat of arms and the wild rose, Alberta's official flower.

The Original Mace



The original Mace was from 1906, when Alberta had its first Assembly. It was made quickly from recycled materials just in time for the meeting of the first Legislature. This Mace was used for the next 50 years.

True/False Questions:

1. The Mace always stays in the Chamber. T F
2. The Mace represents the Legislative Assembly's authority to make laws. T F
3. The Mace is covered when the Lieutenant Governor enters the Chamber. T F
4. There was no Mace for the first Legislative Assembly in 1906. T F
5. The first Mace was made from silver and plated gold. T F
6. The Mace is covered in traditional symbols. T F

Find words or expressions in the text that mean the same as

- power
- come in
- first
- fast
- meeting (as a verb)

Discussion

- What are some traditional symbols from your previous country?*
- What do the symbols mean?*
- Can you think of any other symbols of Canada?*



How Government Representatives Are Elected

Reading/Listening Activity

Student A: Federal Elections

When there is a federal election, the people of Canada vote for someone to represent them in their riding. A riding (also called a constituency) is a geographical area represented by a Member of Parliament. Canada is divided into 338 ridings. These ridings are different from provincial ridings.

Elections in Canada are held every four to five years. If you are 18 years of age or older and a Canadian citizen, you can vote in an election. When you vote, you choose the candidate whom you think is the best person to represent your riding. This candidate usually belongs to a political party, but sometimes there are independent candidates as well.

After the votes have been counted, the candidate with the most votes in each riding becomes the Member of Parliament (MP). The party with the most votes becomes the government of Canada. The leader of the party with the most votes becomes the Prime Minister. The party with the second most votes becomes the Official Opposition. The leader of the party with the second most votes becomes the Leader of the Official Opposition.

Student A: Fill in the blanks with information from the text.



People vote for someone to represent them in the federal government.

The party with the most votes becomes
the

The person with the most votes in a
federal riding becomes
the

The party with the second most votes
becomes the

The leader of the party with the most
votes becomes the

The leader of the party with the second
most votes becomes the

Student A: Answer the questions about federal elections.

- | | | |
|--|---|---|
| a. In an election people vote for the Prime Minister of Canada. | T | F |
| b. Federal constituencies are the same as provincial constituencies. | T | F |
| c. Each Member of Parliament represents one of the 338 ridings in Canada. | T | F |
| d. Typically, candidates belong to one of the main political parties. | T | F |
| e. The party with the most votes after an election becomes the government. | T | F |
| f. The leader of the party with the second most votes becomes the Leader of the Official Opposition. | T | F |



Student A: Listen to your partner read a text about provincial elections, and fill in the blanks with the information you hear. Check your spelling, using the word list below.

In a election the people of Alberta vote for someone to represent them in their riding. A riding (also called a) is a area represented by a
 Alberta is divided into 87 ridings. These ridings are different from federal ridings. in Alberta are held every four to five years. If you are 18 years of age or older and a Canadian, you can vote in an election. When you vote, you choose the candidate whom you think is the best person to represent your riding. This usually belongs to a political party in Alberta, but sometimes there are independent candidates as well. After the votes have been , the candidate with the most votes in each riding becomes the (MLA). The party with the most votes becomes the of Alberta. The of the party with the most votes becomes the The party with the second most votes becomes the Official The leader of the party with the second most votes becomes the Leader of the Official Opposition.

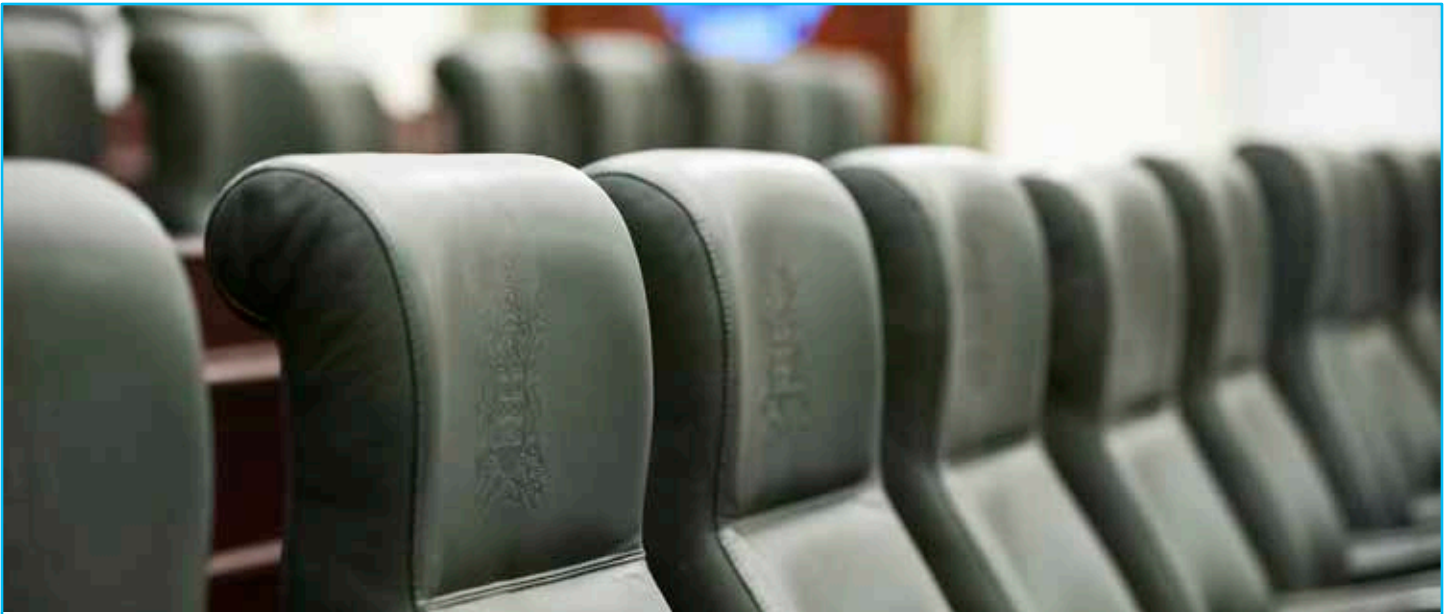
Word List

- provincial
- constituency
- citizen
- candidate
- leader
- Member of the Legislative Assembly
- Opposition
- geographical
- elections
- government
- Premier
- counted



Student A: Answer the questions about provincial elections.

- | | | |
|--|---|---|
| a. In a provincial election people do not vote for the Premier of Alberta. | T | F |
| b. Provincial ridings are not the same as federal ridings. | T | F |
| c. There are currently 87 Members of the Legislative Assembly representing different ridings in Alberta. | T | F |
| d. Typically, candidates belong to one of the main political parties. | T | F |
| e. The party with the most votes becomes the provincial government. | T | F |
| f. The leader of the party with the second most votes becomes the Leader of the Official Opposition. | T | F |



How Government Representatives Are Elected

Reading/Listening Activity

Student B: *Provincial Elections*

In a provincial election the people of Alberta vote for someone to represent them in their riding. A riding (also called a constituency) is a geographical area represented by a Member of the Legislative Assembly. Alberta is divided into 87 ridings. These ridings are different from federal ridings.

Elections in Alberta are typically held every four to five years. If you are 18 years of age or older and a Canadian citizen, you can vote in an election. When you vote, you choose the candidate whom you think is the best person to represent your riding. This candidate usually belongs to a political party in Alberta, but sometimes there are independent candidates as well.

After the votes have been counted, the candidate with the most votes in each riding becomes the Member of the Legislative Assembly (MLA). The party with the most votes becomes the government of Alberta. The leader of the party with the most votes becomes the Premier. The party with the second most votes becomes the Official Opposition. The leader of the party with the second most votes becomes the Leader of the Official Opposition.

Student B: Fill in the blanks with information from the text.



People vote for someone to represent them in the Legislative Assembly.

The party with the most votes becomes the

The person with the most votes in a provincial riding becomes the

The party with the second most votes becomes the

The leader of the party with the most votes becomes the

The leader of the party with the second most votes becomes the

Student B: Answer the questions about provincial elections.



- | | | |
|--|---|---|
| a. In a provincial election people do not vote for the Premier of Alberta. | T | F |
| b. Provincial ridings are not the same as federal ridings. | T | F |
| c. There are currently 89 Members of the Legislative Assembly representing different ridings in Alberta. | T | F |
| d. Typically, candidates belong to one of the main political parties. | T | F |
| e. The party with the most votes after an election becomes the provincial government. | T | F |
| f. The leader of the party with the second most votes becomes the Premier. | T | F |



Student B: Listen to your partner read a text about federal elections, and fill in the blanks with the information you hear. Check your spelling, using the word list below.

When there is a _____, the people of Canada vote for someone to represent them in their riding. A riding (also called a _____) is a geographical area represented by a _____. Canada is divided into 338 ridings. These ridings are _____ from provincial ridings. _____ in Canada are held every four to five years. If you are 18 years of age or older and a Canadian citizen, you can vote in an election. When you vote, you choose the _____ whom you think is the best person to _____ your riding. This candidate usually belongs to a _____ party, but sometimes there are _____ candidates as well. After the votes are _____, the candidate with the most votes in each riding becomes the _____ (MP). The party with the most votes becomes the _____ of Canada. The leader of the party with the most votes becomes the _____. The party with the second most votes becomes the Official Opposition. The leader of the party with the second most votes becomes the Leader of the Official Opposition.

Word List

- represent
- constituency
- government
- candidate
- independent
- Member of Parliament
- different
- political
- election(s)
- counted
- federal
- Prime Minister

Student B: Answer the questions about federal elections.

- a. In an election people vote for the Prime Minister of Canada. T F
- b. Federal constituencies are the same as provincial constituencies. T F
- c. Each Member of Parliament represents one of the 338 ridings in Canada. T F
- d. Typically, candidates belong to one of the main political parties. T F
- e. The party with the most votes becomes the government. T F
- f. The leader of the party with the second most votes becomes the Leader of the Official Opposition. T F



Political Parties

Reading Comprehension Activity

A political party is a group of people who have similar ideas about important issues affecting the people of a country, province or city.

There are many political parties in Canada. The main federal parties are the Conservative Party of Canada, the Liberal Party of Canada, the New Democratic Party, the Bloc Québécois and the Green Party of Canada.

Some of these parties are also in the provincial government of Alberta. The largest political parties in Alberta are the United Conservative Party and the New Democratic Party.

Most politicians belong to a political party. If they don't, they are called independents. Each party has a leader. The leaders of the federal political parties are not the same as the leaders of the corresponding provincial parties.

Find the mistakes. *The sentences below contain errors. Correct and rewrite each sentence. When you are done, check your answers against the text.*

1. The main political parties in Alberta are the Alberta Liberals and the Green Party.

.....
.....
.....

2. There are five main political parties in the federal government.

.....
.....
.....

3. A group of people with different ideas about issues affecting the people of a country can form a political party.

.....
.....
.....

4. Independents belong to a federal political party.

.....
.....
.....

5. The leader of the federal Liberal Party is also the leader of the Alberta Liberals.

.....
.....
.....

6. The United Conservative Party and the Wildrose Alliance merged to create the Progressive Conservatives.

.....
.....
.....

7. The United Conservative Party began in 2000.

.....
.....
.....

Who can you name?

Use the Internet to find the names of the leaders of each of these parties in Alberta. Be sure to include the **current year** so that you get the current leader.

Current Year:.....

The Leader of the United Conservatives.....

The Leader of the New Democrats.....



Alberta's Leaders

Reading Comprehension/Grammar Activity

Premiers of Alberta

The Premier of Alberta is the leader of the political party that has the most seats in the Legislative Assembly. Typically, the Premier is first elected as a Member of the Legislative Assembly in his or her riding. Then he or she is elected by members of the party they represent to be the leader of that party.

There is no limit on how many times a Premier can be re-elected. Some of the Premiers of Alberta have served for a very long time. For example, Premier Ernest Manning served for 25 years. Ralph Klein was the Premier of Alberta for 14 years, from 1992 to 2006. This shows that if the public likes what a politician and his or her party are doing and people keep voting for them in elections, they can continue to form the government.

Lieutenant Governors of Alberta

The Lieutenant Governor is the Sovereign's representative in Alberta. He/she is appointed by the Prime Minister for a period of five years. The Lieutenant Governor does not belong to a political party and cannot be a sitting politician. Anyone can become the Lieutenant Governor.

One of the most important duties of this position is giving royal assent to Bills. The Lieutenant Governor gives the final approval after Bills are passed in the Chamber. Lieutenant Governors also have the power to dismiss the government and call an election.

True/False Questions

- | | | |
|---|---|---|
| 1. The Lieutenant Governor is an elected Member of Parliament. | T | F |
| 2. The Premier can serve for any length of time. | T | F |
| 3. The Lieutenant Governor does not belong to a political party. | T | F |
| 4. Only politicians can be Lieutenant Governors. | T | F |
| 5. The Premier is elected to be leader by the people in his/her riding. | T | F |
| 6. The Lieutenant Governor approves Bills that are passed in the Chamber. | T | F |



Alberta's Leaders

Student A: *Premiers of Alberta*

Firsts for Alberta

Read (and spell) the underlined names for your partner. Fill in the blanks with what you hear.

The first Premier of Alberta was Alexander Rutherford.

The first female Premier of Alberta was Alison Redford.

The first female to be elected to a provincial Legislature in Canada was Louise McKinney of Alberta.

The first female MLA to introduce legislation in Alberta was

The first female Lieutenant Governor in Alberta was

The first Lieutenant Governor of First Nations heritage in Alberta was

The first Chinese Lieutenant Governor in Alberta was

Internet Research

Student A: How Many People Can You Name? Search the Internet for the names of each of these people. Compare your answers with those of your partner.

The first Prime Minister of Canada.....

The first female Prime Minister of Canada.....

The first female Governor General of Canada.....

The first visible minority Governor General.....



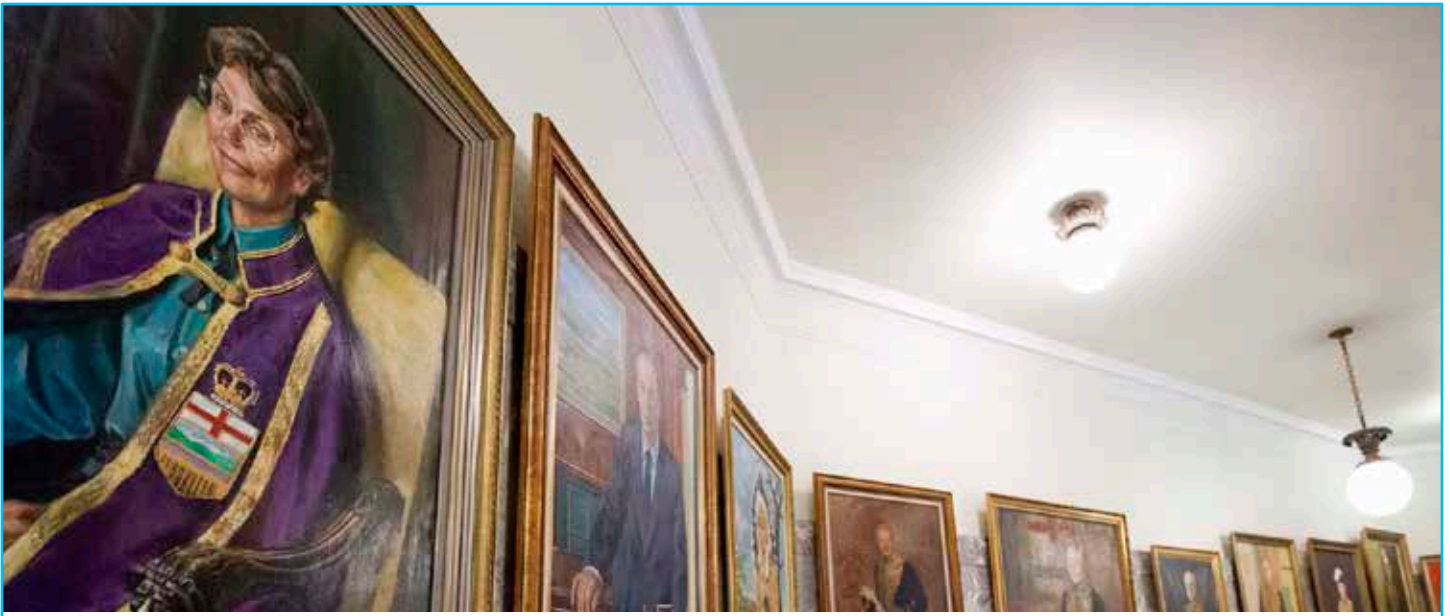
Grammar focus: With a partner practise asking and answering questions, using “who” questions.

E.g., Who was the first Premier of Alberta?

The first Premier of Alberta was Alexander Rutherford.

Ask your partner for the names of each of these people, using a “who” question. Answer your partner’s questions.

- The first Prime Minister of Canada
- The first female Premier of Alberta
- The first Lieutenant Governor of First Nations heritage in Alberta
- The first female MLA to introduce legislation in Alberta
- The first female Prime Minister



Alberta's Leaders

Student B: *Lieutenant Governors of Alberta*

Firsts for Alberta

Read (and spell) the underlined names for your partner. Fill in the blanks with what you hear.

The first Premier of Alberta was

The first female Premier of Alberta was.....

The first female to be elected to a provincial Legislature in Canada was of Alberta.

The first female MLA to introduce legislation in Alberta was Roberta MacAdams.

The first female Lieutenant Governor in Alberta was Helen Hunley.

The first Lieutenant Governor of First Nations heritage in Alberta was Ralph Steinhauer.

The first Chinese Lieutenant Governor in Alberta was Norman Kwong.

Internet Research

Student B: Who can you name? Search the Internet for the names of each of these people. Compare your answers with those of your partner.

The first Prime Minister of Canada

The first female Prime Minister

The first female Governor General of Canada

The first visible minority Governor General



Grammar focus: With a partner practise asking and answering questions, using “who” questions.

E.g., Who was the first Premier of Alberta?
[The first Premier of Alberta was Alexander Rutherford.](#)

Ask your partner for the names of each of these people, using a “who” question. Answer your partner’s questions.

- The first visible minority Governor General of Canada
- The first female Lieutenant Governor in Alberta
- The first Chinese Lieutenant Governor in Alberta
- The first female to be elected to a provincial Legislature in Canada
- The first female Governor General of Canada



Women's Rights in Canada

Listening

Listen to the text. Circle True or False

- | | | |
|---|---|---|
| a. Men and women did not have the same rights in the early 1900s. | T | F |
| b. Women were not considered persons under the Constitution. | T | F |
| c. Women could own land, but they could not get a divorce. | T | F |
| d. The Famous Five are five women from different parts of Canada. | T | F |
| e. The Famous Five fought for women to be considered persons. | T | F |
| f. They won their case in court in 1921. | T | F |
| g. The Famous Five helped women have more rights. | T | F |



Listen to the text again. Match the names of the five women with the description on the right. Fill in the blanks with the correct woman's name.

Name.....



Irene Parlby



Nellie McClung



Louise McKinney



Emily Murphy



Henrietta Edwards

..... was the first woman appointed as a court judge.

The National Council of Women of Canada was started by

..... was elected as a Liberal member of the Alberta Legislature in 1921.

..... was the first female Cabinet Minister in Alberta.

In 1917..... was the first female MLA to be elected.



- Unable to achieve benchmark yet (1-3 correct answers)
- Still needs help (4-6 correct answers)
- Satisfactory benchmark achievement – **Pass** (7+ correct answers)

Post Activity

Speaking

Name:

Student A: Instructions

1. Write your partner's name at the top of the page.
2. Read the following questions to your partner. *Do not read the answer below the question.*
3. If your partner gets the right answer, put a check mark .
4. If your partner does not get the right answer, mark .
5. When you are finished, add up all the correct answers and give this paper to your partner.

1. Who is Canada's Head of State?

.....
Canada's Head of State is King Charles III.

2. Where does the government of Alberta meet?

.....
The government of Alberta meets in the Legislature Building in Edmonton.

3. What is the capital of Canada?

.....
Ottawa is the capital of Canada.

4. What are three things for which the federal government is responsible?

.....
The federal government is responsible for national defence, national transportation, postal service, citizenship and immigration, the environment and Indigenous affairs.

5. How are Senators chosen?

.....
Senators are appointed by the Prime Minister.

6. How many MLAs represent the province of Alberta?

.....
87 MLAs represent the province of Alberta.

7. Alberta was named after a princess. What was her name?

.....
Her name was Princess Louise Caroline Alberta.

8. What is a constituency?

.....
A constituency is a geographical area represented by a Member of Parliament (federal) or a Member of the Legislative Assembly (provincial). A constituency is also called a riding.

9. Who is the Premier of Alberta?

.....
The Premier of Alberta is Danielle Smith.

10. Which party is the Official Opposition of Alberta?

The New Democratic Party is the Official Opposition.

11. How does someone become Premier?

The leader of the party with the most seats in the Legislative Assembly becomes the Premier.

12. What is one major difference between the federal government and provincial/territorial governments?

There is no Senate at the provincial level.

13. What does the cabinet at the federal level do?

Cabinet advises the Prime Minister.

14. Name the political parties in Canada.

Conservative Party of Canada, the Liberal Party of Canada, the New Democratic Party, the Bloc Québécois and the Green Party of Canada.

15. Who was Canada's first Prime Minister?

Sir John A. McDonald was Canada's first Prime Minister.



Self-reflection

Which questions did I answer incorrectly?.....

I will review these topics again:

1.

2.

3.

Post Activity

Speaking

Name:

Student B: Instructions

1. Write your partner's name at the top of the page.
2. Read the following questions to your partner. *Do not read the answer below the question.*
3. If your partner gets the right answer, put a check mark .
4. If your partner does not get the right answer, mark .
5. When you are finished, add up all the correct answers and give this paper to your partner.

1. Who is the head of Canada's government?

The Prime Minister is the head of Canada's government.

2. Where does the government of Canada meet?

The government of Canada meets in the House of Commons in Ottawa.

3. What is the capital of Alberta?

The capital of Alberta is Edmonton.

4. What are the three levels of government?

The three levels of government are federal, provincial/territorial and municipal.

5. How are Members of Parliament chosen?

They are elected by the people of Canada.

6. How many Members of Parliament represent Canada?

There are 338 Members of Parliament.

7. Who was Chief Crowfoot, and what did he do?

Chief Crowfoot was the leader of the First Nations Blackfoot people. He signed a treaty that allowed the Canadian Pacific Railway to run through Blackfoot territory.

8. What is a riding?

A riding is a geographical area represented by a Member of Parliament (federal) or a Member of the Legislative Assembly (provincial). A riding is also called a constituency.

9. Who is the Prime Minister of Canada?

The Prime Minister of Canada is Justin Trudeau.

10. What do Senators do?



Senators review and vote on proposed laws.

11. How does someone become the Prime Minister?



The leader of the party with the most seats in the House of Commons becomes the Prime Minister.

12. The party with the second most votes in an election is called?



The party with the second most votes is called the Official Opposition.

13. Name the two main political parties in Alberta.



The two main political parties in Alberta are the United Conservative Party and the New Democrats.

14. Which political party is in office in Alberta?



The United Conservative Party are in office in Alberta.



Self-reflection

Which questions did I answer incorrectly?.....

I will review these topics again:

1.....

2.....

3.....

Post Activity

Speaking/Self-assessment

Name:

Task: Give a short description about what you liked the most or thought was most interesting about the tour and why. Use the checklist below to think about how you did.

	Yes	No	What do you still need to work on?
Your description was 5-7 sentences long.			
You spoke in complete sentences.			
You used appropriate vocabulary.			
You used proper grammar. You used the past tense correctly.			
The listener was able to understand your description.			
What did you do well?			

Post Activity



Reading

Name:

When you enter the Legislative Assembly Chamber, you see the Speaker's chair in front of you. The Speaker plays an important role in the Legislative Assembly. The Speaker's job is to keep order in the Chamber. He/she makes sure Members of the Legislative Assembly (MLAs) follow the rules when they ask or answer questions, debate or vote in the Assembly. The Speaker also makes sure all MLAs have a chance to speak. However, the Speaker cannot debate, ask or answer questions or vote except to break a tie (when there is an equal number of votes for and against something being discussed).

To be a Speaker, you first have to be elected as an MLA in one of the province's constituencies. Then MLAs nominate different people to be the Speaker. Finally, MLAs vote on the one person from this group whom they want to be the Speaker.

Each day the Legislative Assembly begins when the Sergeant-at-Arms enters the Chamber and yells, "Order, order! Mr. Speaker!" The Sergeant-at-Arms then enters the Chamber, followed by the Speaker. The Speaker takes the chair at the head of the Chamber and begins the job of managing the Assembly's daily business.

The Honourable Nathan Cooper
Speaker of the Legislative Assembly of Alberta (2019-present)
MLA, Olds-Didsbury-Three Hills

Choose the best answer.

1. *The Speaker's job is to*
 - a. Debate, ask or answer questions or vote in an Assembly
 - b. Make sure the Sergeant-at-Arms follows the rules
 - c. Make sure MLAs follow the rules in the Chamber
2. *When there is an Assembly, the Sergeant-at-Arms enters the Chamber*
 - d. After the Speaker
 - e. Before the Speaker
 - f. Before all of the Members of the Legislative Assembly
3. *The Speaker can*
 - g. Only vote on something being discussed in special situations
 - h. Never vote on something being discussed
 - i. Always vote on something being discussed
4. *The person who yells, "Order, order! Mr. Speaker!" is*
 - j. The Sergeant-at-Arms
 - k. An MLA
 - l. The Speaker
5. *The Speaker*
 - m. Is nominated by the voters during a provincial election
 - n. Is not an elected MLA
 - o. Is first an elected Member of the Legislative Assembly and then voted in by other MLAs

Label the chart below to show how someone becomes the Speaker.

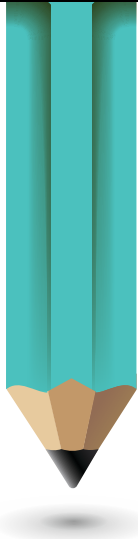
First,
Then
Finally,



- Unable to achieve benchmark (1-2 correct answers)
- Still needs help (3-5 correct answers)
- Satisfactory benchmark achievement — **Pass** (6+ correct answers)



Post Activity



Writing

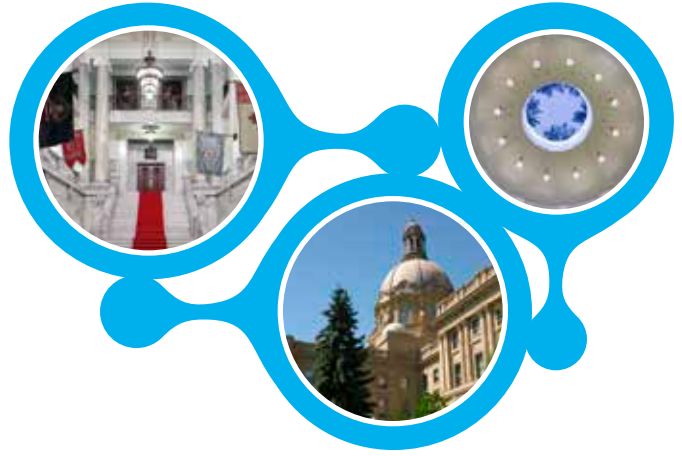
Write a short paragraph (7-10 sentences) about the Alberta Legislature Building, using the pictures on the [next page](#).

When you are finished, check that:

- Your paragraph has an opening sentence, body and concluding sentence.*
- You described the building in a way that the reader could understand.*
- You used correct grammar in your sentences.*
- You used correct punctuation and capitalization.*
- You used some of the vocabulary learned in class to describe the pictures.*

Use this page to write your paragraph.

Name:.....



.....

.....

.....

.....

.....

.....

.....

.....

.....

.....

.....

.....

.....

.....

.....

.....

.....

.....

.....

.....

.....

.....

.....

Legislative Assembly of Alberta - Visitor Services

English Language Learners: Activity Book – 3 to 4

Updated: September 2024

Phone: 780.427.7362 • Toll Free: 310.0000 • visitorinfo@assembly.ab.ca

